

02A	SK8 & SK11 MOVED					
01B	SK6&10 PINOUT CHANGED,D4&5 ADDED	PAUL G				30/09/98
01A	SOCKETS_CHANGED	PAUL G				28/09/98
REV/ISS	AMENDMENTS	DRAWN	CHKD	D.O.	APVD	DATE

© TAIT ELECTRONICS
 BACKPLANE
 RX-ONLY+CH/PNL+ALARM

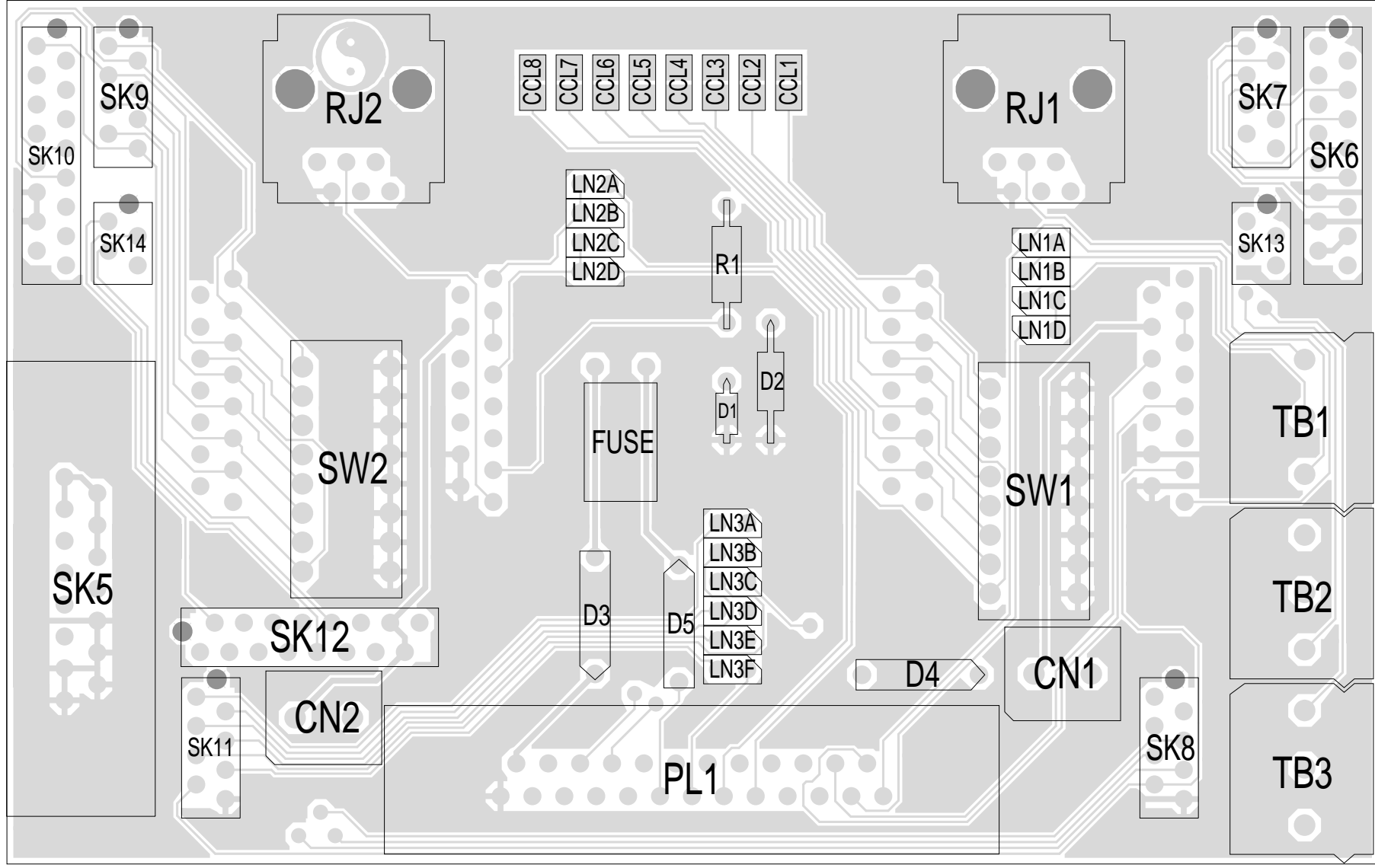
IPN: 220-01562-0A	ISSUE: A	ID: 2.SC. 1
PROJECT: T800-22	DESIGNER: PAUL G	FILE NAME: 156201B
FILE DATE: 20/10/98	NO.SHEETS: 1	

4

3

2

1



A

B

C

D

E

TAIT ELECTRONICS	IPN: 220-01562-02	ISS: A	ID: 1.TA	DATE: 20 Oct 1998
T800-50-0002 PCB LAYOUT - TOP SIDE				

Scale: 2:0:1 ; Rotation: 0 degrees

PL1		SK1		SK2		SK3		SK4		SK5		SK6		SK7		SK8	
PIN	FUNCTION	PIN	FUNCTION	PIN	FUNCTION	PIN	FUNCTION	PIN	FUNCTION	PIN	FUNCTION	PIN	FUNCTION	PIN	FUNCTION	PIN	FUNCTION
1	LEFT RX LINE 1	1	LEFT RX LINE 1	1	LEFT RX CHAN SELECT 1	1	RIGHT RX LINE 1	1	RIGHT RX CHAN SELECT 1	1	13.8V	1	CHANNEL SELECT 8	1	CHANNEL SELECT 1	1	SPEAKER 1
2	LEFT RX LINE 4	2	C.T.	2	LEFT RX CHAN SELECT 2	2	C.T.	2	RIGHT RX CHAN SELECT 2	2	13.8V	2	0V	2	CHANNEL SELECT 2	2	SPEAKER 2
3	LEFT RX SPEAKER	3	C.T.	3	LEFT RX CHAN SELECT 3	3	C.T.	3	RIGHT RX CHAN SELECT 3	3	N/C	3	CHANNEL SELECT 6	3	CHANNEL SELECT 3	3	SPEAKER 3
4	LEFT RX RELAY DRIVE	4	LEFT RX LINE 4	4	LEFT RX CHAN SELECT 4	4	RIGHT RX LINE 4	4	RIGHT RX CHAN SELECT 4	4	N/C	4	CHANNEL SELECT 5	4	CHANNEL SELECT 4	4	SPEAKER 4
5	RIGHT RX LINE 1	5	LEFT RX RSSI	5	LEFT RX CHAN SELECT 5	5	RIGHT RX RSSI	5	RIGHT RX CHAN SELECT 5	5	N/C	5	CHANNEL SELECT 7	5	CHANNEL SELECT 5	5	SPEAKER 5
6	RIGHT RX LINE 4	6	N/C	6	LEFT RX CHAN SELECT 6	6	N/C	6	RIGHT RX CHAN SELECT 6	6	N/C	6	CHANNEL SELECT 4	6	CHANNEL SELECT 6	6	SPEAKER 6
7	RIGHT RX SPEAKER	7	LEFT RX SERIAL COMM	7	LEFT RX CHAN SELECT 7	7	RIGHT RX SERIAL COMM	7	RIGHT RX CHAN SELECT 7	7	0V	7	LEFT RX SPEAKER	7	CHANNEL SELECT 7	7	SERIAL COMM
8	RIGHT RX RELAY DRIVE	8	LEFT RX SPEAKER	8	N/C	8	RIGHT RX SPEAKER	8	N/C	8	0V	8	CHANNEL SELECT 3	8	CHANNEL SELECT 8	8	0V
9	BATTERY ALARM	9	13.8V	9	LEFT RX INHIBIT	9	13.8V	9	RIGHT RX INHIBIT	9	13.8V	9	LEFT RX SPEAKER	SK7 or SK13		SK11	
10	URGRNT ALARM	10	13.8V	10	LEFT RX CTCSS DISABLE	10	13.8V	10	RIGHT RX CTCSS DISABLE	10	13.8V	10	CHANNEL SELECT 2				
11	PSU ALARM	11	LEFT RX GATE	11	LEFT RX CHAN SELECT 8	11	RIGHT RX GATE	11	RIGHT RX CHAN SELECT 8	11	13.8V	11	0V	9/1	PSU ALARM	PIN	FUNCTION
12	RIGHT RX AUX 0	12	N/C	12	N/C	12	N/C	12	N/C	12	N/C	12	CHANNEL SELECT 1	10/2	URGENT ALARM	1	SPEAKER 1
13	0V NEGATIVE	13	N/C	13	LEFT RX AUX 0	13	N/C	13	RIGHT RX AUX 0	13	0V	13	0V	11/3	BATTERY ALARM	2	SPEAKER 2
14	LEFT RX RSSI	14	0V	14	LEFT RX AUX 1	14	0V	14	RIGHT RX AUX 1	14	0V	14	13.8V	12/4	N/C	3	SPEAKER 3
15	LEFT RX GATE	15	0V	15	N/C	15	0V	15	N/C	15	0V	15	13.8V			4	SPEAKER 4
16	LEFT RX INHIBIT											16	N/C			5	SPEAKER 5
17	LEFT RX CTCSS DISABLE															6	SPEAKER 6
18	RIGHT RX RSSI															7	SERIAL COMM
19	RIGHT RX GATE															8	0V
20	RIGHT RX INHIBIT																
21	RIGHT RX CTCSS DISABLE	TB1		TB2		TB3											
22	LEFT RX AUX 1	PIN	FUNCTION	1	LEFT RX LINE 4 INVERTED	1	RIGHT RX LINE 4 INVERT										
23	LEFT RX AUX 0	1	LEFT RX LINE 1 INVERT	2	N/C	2	RIGHT RX LINE 1 INVERTED										
24	RIGHT RX AUX 1	2	LEFT RX LINE 4 INVERT	3	RIGHT RX LINE 1 INVERT	3	RIGHT RX LINE 4 INVERTED										
25	13.8.V POSITIVE	3	LEFT RX LINE 1 INVERTED														
SK10		SK9		SK12		LN1		LN3									
PIN	FUNCTION	PIN	FUNCTION	PIN	FUNCTION	PIN	FUNCTION	PIN	FUNCTION								
1	CHANNEL SELECT 8	1	CHANNEL SELECT 1	1	N/C	1	LEFT RX LINE 1	1	LEFT RX SPEAKER								
2	0V	2	CHANNEL SELECT 2	2	PSU ALARM	2	LEFT RX LINE 1	2	LEFT RX SPEAKER								
3	CHANNEL SELECT 6	3	CHANNEL SELECT 3	3	N/C	3	LEFT RX LINE 4	3	LEFT RX SPEAKER								
4	CHANNEL SELECT 5	4	CHANNEL SELECT 4	4	N/C	4	LEFT RX LINE 4	4	RIGHT RX SPEAKER								
5	CHANNEL SELECT 7	5	CHANNEL SELECT 5	5	N/C	5	LEFT RX LINE 1	5	RIGHT RX SPEAKER								
6	CHANNEL SELECT 4	6	CHANNEL SELECT 6	6	N/C	6	LEFT RX LINE 1 INVERT	6	RIGHT RX SPEAKER								
7	RIGHT RX SPEAKER	7	CHANNEL SELECT 7	7	N/C	7	LEFT RX LINE 4 INVERT	A	SPEAKER SELECT 1								
8	CHANNEL SELECT 3	8	CHANNEL SELECT 8	8	N/C	8	LEFT RX LINE 4	B	SPEAKER SELECT 3								
9	RIGHT RX SPEAKER	SK9 or SK14		9	URGENT ALARM	LN2		C	SPEAKER SELECT 5								
10	CHANNEL SELECT 2			10	BATTERY ALARM			D	SPEAKER SELECT 2								
11	0V	9/1	PSU ALARM	11	N/C	PIN	FUNCTION	E	SPEAKER SELECT 4								
12	CHANNEL SELECT 1	10/2	URGENT ALARM	12	N/C	1	RIGHT RX LINE 1	F	SPEAKER SELECT 6								
13	0V	11/3	BATTERY ALARM	13	N/C	2	RIGHT RX LINE 1										
14	13.8V	12/4	N/C	14	N/C	3	RIGHT RX LINE 4										
15	13.8V			15	N/C	4	RIGHT RX LINE 4										
16	N/C			16	N/C	5	RIGHT RX LINE 1										
						6	RIGHT RX LINE 1 INVERT										
						7	RIGHT RX LINE 4 INVERT										
						8	RIGHT RX LINE 4										

LN 1 :-FITTED : 1-5, for LEFT RX LINE 1 TO PL1 PIN 1
: 1-2, NOT USED
: 5-6, NOT USED
: 2-6, for LEFT RX LINE 1 TO TB1 PIN 1
: 2-3, NOT USED
: 6-7, NOT USED
: 3-7, for LEFT RX LINE 4 TO TB1 PIN 2
: 3-4, NOT USED
: 7-8, NOT USED
: 4-8, for LEFT RX LINE 4 TO PL1 PIN 2

LN 2 :-FITTED : 1-5, for RIGHT RX LINE 1 TO PL1 PIN 5
: 1-2, NOT USED
: 5-6, NOT USED
: 2-6, for RIGHT RX LINE 1 TO TB2 PIN 3
: 2-3, NOT USED
: 6-7, NOT USED
: 3-7, for RIGHT RX LINE 4 TO TB3 PIN 1
: 3-4, NOT USED
: 7-8, NOT USED
: 4-8, for RIGHT RX LINE 4 TO PL1 PIN 6

LN 3 :-FITTED : 1-A, for LEFT RX SPEAKER TO SK11 PIN 1
: 1-2, NOT USED
: A-B, NOT USED
: 2-B, for LEFT RX SPEAKER TO SK11 PIN 3
: 2-3, NOT USED
: B-C, NOT USED
: 3-C, for LEFT RX SPEAKER TO SK11 PIN 5
: 3-4, NOT USED
: C-D, NOT USED
: 4-D, for RIGHT RX SPEAKER TO SK11 PIN 2
: 4-5, NOT USED
: D-E, NOT USED
: 5-E, for RIGHT RX SPEAKER TO SK11 PIN 4
: 5-6, NOT USED
: E-F, NOT USED
: 6-F, for RIGHT RX SPEAKER TO SK11 PIN 6

CN1	
PIN	FUNCTION
1	13.8V
2	LEFT RX RELAY DRIVE
CN2	
1	13.8V
2	RIGHT RX RELAY DRIVE
RJ1	
PIN	FUNCTION
1	N/C
2	N/C
3	SERIAL COMM
4	LEFT RX SPEAKER
5	0V
6	N/C
RJ2	
1	N/C
2	N/C
3	SERIAL COMM
4	RIGHT RX SPEAKER
5	0V
6	N/C



TAIT
Radio Communications
Christchurch
New Zealand

ISSUE	AMENDMENT	DRAWN	CHECKED	DATE
3	Link settings corrected	AMM	MJB	25/7/00
2	LN details added	AMM	ABB	2/7/99
1	Original	AMM	ABB	2/10/98

LOCATION:
FILE: c:\ab\t800-50-0002 pins.vsd

TITLE: PIN FUNCTIONS OF BACKPLANE
(220-01562-02)
RECEIVE ONLY / CH-PNL / ALARMS
DRAWING: T800-50-0002